

COORDINATE TABLE

POINT#	NORTH	EAST
1	626051.60	139780.94
2	626166.33	1399992.43
3	626167.75	1400156.46
4	626226.34	1400462.46
5	626305.27	1401028.46
6	626398.36	1399704.64
7	627692.36	1400542.44
8	626394.09	1399289.14
9	626272.81	1399076.72
10	626272.81	1399164.10
11	626272.81	1400602.56
12	626272.81	1399066.34
13	626272.81	1399066.34
14	626272.81	1399066.34
15	626272.81	1399066.34
16	626272.81	1399066.34
17	626272.81	1399066.34
18	626272.81	1399066.34
19	626272.81	1399066.34
20	626272.81	1399066.34
21	626272.81	1399066.34
22	626272.81	1399066.34
23	626272.81	1399066.34
24	626272.81	1399066.34
25	626272.81	1399066.34
26	626272.81	1399066.34
27	626272.81	1399066.34
28	626272.81	1399066.34
29	626272.81	1399066.34
30	626272.81	1399066.34
31	626272.81	1399066.34
32	626272.81	1399066.34
33	626272.81	1399066.34
34	626272.81	1399066.34
35	626272.81	1399066.34
36	626272.81	1399066.34
37	626272.81	1399066.34
38	626272.81	1399066.34
39	626272.81	1399066.34
40	626272.81	1399066.34
41	626272.81	1399066.34
42	626272.81	1399066.34
43	626272.81	1399066.34
44	626272.81	1399066.34
45	626272.81	1399066.34
46	626272.81	1399066.34
47	626272.81	1399066.34
48	626272.81	1399066.34
49	626272.81	1399066.34
50	626272.81	1399066.34
51	626272.81	1399066.34
52	626272.81	1399066.34
53	626272.81	1399066.34
54	626272.81	1399066.34
55	626272.81	1399066.34
56	626272.81	1399066.34
57	626272.81	1399066.34
58	626272.81	1399066.34
59	626272.81	1399066.34
60	626272.81	1399066.34
61	626272.81	1399066.34
62	626272.81	1399066.34
63	626272.81	1399066.34
64	626272.81	1399066.34
65	626272.81	1399066.34
66	626272.81	1399066.34
67	626272.81	1399066.34
68	626272.81	1399066.34
69	626272.81	1399066.34
70	626272.81	1399066.34
71	626272.81	1399066.34
72	626272.81	1399066.34
73	626272.81	1399066.34
74	626272.81	1399066.34
75	626272.81	1399066.34
76	626272.81	1399066.34
77	626272.81	1399066.34
78	626272.81	1399066.34
79	626272.81	1399066.34
80	626272.81	1399066.34
81	626272.81	1399066.34
82	626272.81	1399066.34
83	626272.81	1399066.34
84	626272.81	1399066.34
85	626272.81	1399066.34
86	626272.81	1399066.34
87	626272.81	1399066.34
88	626272.81	1399066.34
89	626272.81	1399066.34
90	626272.81	1399066.34
91	626272.81	1399066.34
92	626272.81	1399066.34
93	626272.81	1399066.34
94	626272.81	1399066.34
95	626272.81	1399066.34
96	626272.81	1399066.34
97	626272.81	1399066.34
98	626272.81	1399066.34
99	626272.81	1399066.34
100	626272.81	1399066.34

LINE TABLE

NUMBER	BEARING	DISTANCE
FB376	S 36°59'13" E	13.46'
FB377	S 03°58'31" E	18.74'
FB378	S 00°26'10" E	12.68'
FB379	S 24°32'10" W	25.12'
FB380	S 07°26'51" W	28.53'
FB381	S 01°22'36" E	25.56'
FB382	S 62°59'35" W	26.20'
FB383	S 43°36'51" W	21.63'
FB384	N 89°58'05" W	34.09'
FB385	S 59°59'06" W	52.27'
FB386	S 53°27'28" E	22.66'
FB387	N 72°46'15" W	6.87'
FB388	S 89°12'58" W	22.68'
FB389	N 89°06'53" W	16.36'
FB390	S 78°31'34" W	31.95'
FB391	S 63°14'35" W	9.08'
FB392	N 55°58'33" W	11.36'
FB393	N 87°19'35" W	7.77'
FB394	S 56°44'40" W	3.26'
FB395	N 88°18'28" W	12.92'
FB401	N 12°05'48" E	9.46'
FB402	S 41°10'05" W	40.69'
FB403	S 68°05'12" E	11.95'
FB404	N 82°33'08" E	35.58'
FB405	N 12°29'25" E	81.13'
FB406	N 74°06'40" E	41.98'
FB407	N 88°06'22" E	44.52'
FB408	N 81°08'21" E	47.26'
FB409	S 74°09'46" E	42.32'
FB410	N 80°25'46" E	47.31'
FB411	N 64°12'37" E	36.48'
FB412	N 89°57'39" E	51.29'
FB413	N 70°03'24" E	41.42'
FB414	N 53°00'10" E	52.57'
FB415	N 69°09'00" E	53.92'
FB416	N 52°08'47" E	30.82'
FB417	N 36°58'37" E	8.23'
FB418	S 61°37'47" E	11.20'
FB419	N 86°16'51" E	51.12'
FB420	N 70°00'27" E	29.29'

LINE TABLE

NUMBER	BEARING	DISTANCE
FB441	N 61°39'11" E	26.88'
FB442	S 83°57'03" E	26.20'
FB443	N 86°19'39" E	34.49'
FB444	N 66°36'39" E	38.71'
FB445	N 82°29'36" E	10.45'
FB446	S 31°03'02" E	16.07'
FB447	S 07°34'47" W	7.52'
FB448	S 07°29'07" W	14.27'
FB449	S 07°14'16" W	33.94'
FB450	S 24°46'53" W	47.44'
FB451	S 88°10'38" E	25.50'
FB452	N 04°32'36" E	21.02'
FB453	N 06°09'46" E	106.19'
FB454	N 56°49'39" E	34.89'
FB455	N 48°25'18" E	13.64'
FB456	N 70°58'18" E	85.39'
FB457	N 61°04'39" E	56.92'
FB458	N 77°58'37" E	94.23'
FB459	S 10°19'34" W	39.57'
FB460	S 56°25'35" E	23.26'

LINE TABLE

NUMBER	BEARING	DISTANCE
FC204	N 70°53'47" W	60.31'
FC205	N 34°54'07" E	41.74'
FC206	N 66°29'50" E	33.64'
FC207	S 88°34'03" E	107.35'
FC208	N 81°42'04" E	65.07'
FC209	S 81°39'16" E	101.66'
FC210	N 80°25'46" E	25.31'
FC211	S 21°47'51" E	86.70'
FC212	S 31°22'04" E	64.43'
FC213	N 87°13'47" E	13.00'

CURVE TABLE

NUMBER	DELTA	RADIUS	LENGTH	CHORD BEARING	DISTANCE	TANGENT
FC77	20°36'41"	360.00	129.50	S 81°30'27" E	128.81	66.46'
FC78	52°21'33"	190.00	173.63	S 68°38'00" E	167.66	93.41'
FC79	10°16'17"	100.00	190.71	S 12°27'04" E	163.10	140.90'
FC80	59°21'39"	100.00	103.60	N 82°13'58" E	99.03	56.99'
FC81	39°15'32"	100.00	68.52	N 32°07'12" E	67.19	35.67'
FC82	59°52'16"	120.00	117.02	N 45°10'56" E	112.43	63.63'
FC83	112°51'31"	100.00	197.15	S 31°41'53" E	166.74	150.97'
FC84	104°00'17"	100.00	191.52	N 39°49'13" E	157.61	128.01'
FC85	69°03'56"	100.00	120.54	N 24°11'39" E	113.36	68.81'
FC86	66°46'13"	100.00	116.51	S 23°02'59" E	110.03	65.88'
FC87	99°31'07"	100.00	173.69	N 73°48'51" E	152.67	110.16'
FC88	06°53'54"	50.00	6.02	N 72°52'12" W	6.02	3.01'
FC89	01°19'09"	7674.97	176.71	N 03°25'48" W	176.71	88.36'
FC90	04°35'54"	7661.97	614.92	N 01°47'25" W	614.75	307.62'

LINE TABLE

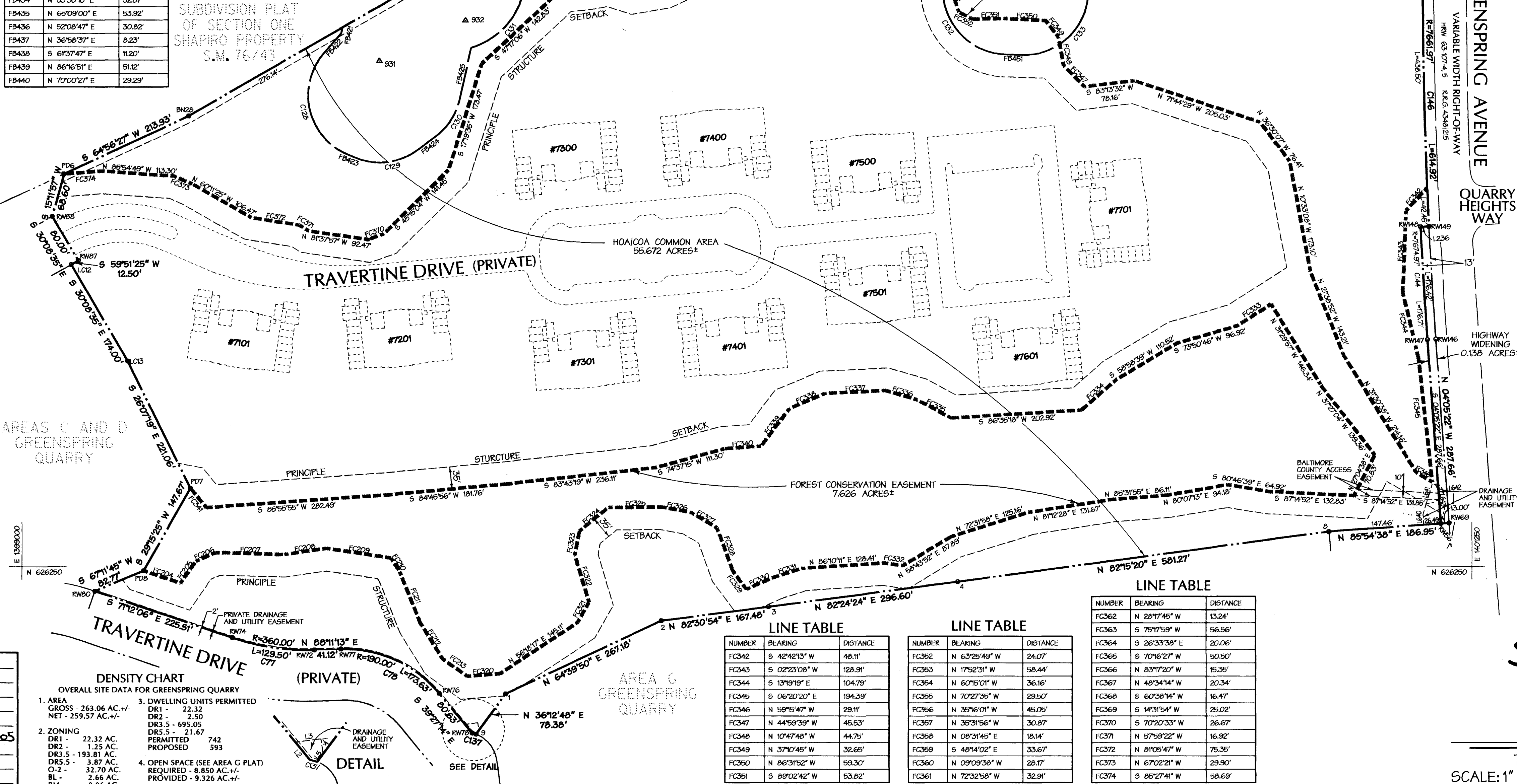
NUMBER	BEARING	DISTANCE
L2	N 39°27'14" W	17.59'
L3	N 82°20'34" E	21.09'
L4	S 07°39'26" E	11.89'
L5	S 36°12'48" W	7.60'

TRAVERSE COORDINATES

POINT#	NORTH	EAST	DESCRIPTION
931	627039.45	1399556.36	PIN AND CAP
932	627020.40	1399689.12	PIN AND CAP
933	627036.05	1399767.12	PIN AND CAP
934	627343.48	1399922.34	PIN AND CAP

LINE TABLE

NUMBER	BEARING	DISTANCE
FM223	S 06°59'29" E	36.98'
FM224	N 41°51'53" W	34.78'
FM225	S 63°25'28" W	9.32'
FM226	N 86°00'26" W	12.83'
FM227	S 40°50'33" W	14.96'
FM228	S 84°17'12" W	20.34'
FM229	N 03°30'21" W	15.64'
FM230	N 69°08'17" W	34.44'
FM231	S 76°44'07" W	23.64'
FM232	N 89°43'49" W	17.07'
FM233	N 54°48'13" W	41.25'
FM234	N 49°05'05" W	32.63'
FM235	S 88°28'33" W	29.85'
FM236	S 73°55'59" W	17.32'
FM237	N 80°54'20" W	22.35'
FM238	S 72°39'07" W	14.49'
FM239	S 60°25'30" W	29.84'
FM240	S 70°45'00" W	58.94'
FM241	S 78°15'07" W	28.78'
FM242	N 89°18'57" W	15.54'
FM243	S 82°10'15" W	17.21'
FM244	S 70°30'45" W	19.62'
FM245	S 47°25'40" W	15.94'
FM246	S 60°48'47" W	10.83'
FM247	S 77°25'25" W	23.16'
FM248	N 79°32'23" W	34.72'
FM249	N 89°52'33" W	17.63'
FM250	N 61°46'29" E	12.00'
FM251	N 85°31'27" E	39.34'
FM252	N 32°15'31" E	6.05'
FM253	N 06°28'34" W	25.14'
FM254	S 51°04'07" E	9.58'
FM255	S 85°42'03" E	13.66'
FM256	N 65°49'32" E	28.34'
FM257	N 74°09'18" E	47.46'
FM258	N 56°17'10" E	9.30'
FM259	N 40°27'44" E	18.80'
FM260	N 66°26'43" E	52.15'
FM261	S 00°04'33" E	65.81'



P.W.A. COMPLETED

FINAL PLAT: *Final Plat*

P.D.M. *DR 3-7-05*

STREETS, NUMBERING *DR 3-7-05*

DEV. PLAN REVIEW *DR 3-7-05*

DEV. ENGINEER *R.D. Farnley*

DIV. OF REAL ESTATE

ASSESSMENTS

RECREATION & PARKS

DENSITY CHART

OVERALL SITE DATA FOR GREENSPRING QUARRY
1. AREA GROSS - 263.06 AC. +/-
NET - 259.57 AC. +/-
2. ZONING DR2 - 22.32 AC.
DR3 - 1.25 AC.
DR3.5 - 193.81 AC.
DR5.5 - 3.87 AC.
BL - 2.66 AC.
BM - 2.96 AC.
3. DWELLING UNITS PERMITTED DR1 - 22.32
DR2 - 1.25
DR3 - 695.05
DR3.5 - 21.67
PERMITTED 742
PROPOSED 593
4. OPEN SPACE (SEE AREA G PLAT) REQUIRED - 8.850 AC. +/-
PROVIDED - 9.326 AC. +/-

DETAIL

SEE DETAIL

OWNER/DEVELOPER

THE ARUNDEL CORPORATION
P.O. BOX 5000
34 LOVETON CENTER
SPARKS, MARYLAND 21152

DEED REFERENCE: W.J.R. 3683/338
DEED REFERENCE: W.J.R. 3732/529
DEED REFERENCE: R.J.S. 1398/318

TAX ACCOUNT NO.: 03-01-074331
TAX ACCOUNT NO.: 03-01-074332
TAX ACCOUNT NO.: 03-01-074326

OWNERS' CERTIFICATE